

Goldstake Explorations Inc. is a Canadian mining exploration and development company with a diversified portfolio of precious metals, base metals and uranium properties in Canada, USA and Australia. With an exciting array of actionable properties worldwide, the Company continues to seek valuable properties around the globe.


**PROPERTIES**
**A U S T R A L I A**
*Home of Bullion Mine, Northern Territory – Copper, Gold, Silver, Zinc, Lead*

50% owned by Goldstake and 50% by Imperial Granite and Minerals Pty. Ltd. The property has produced 2,500 tons of 22.5% copper, with historic additional estimates of 308,000 tonnes of 13% copper from surface to a depth of 320 ft. The property is in advanced stage and the Company's intention with its partners is to spin off the interest into a new Australian public company, raising Australian \$15 million dollars to confirm and increase the reserves and prepare a bankable feasible study.


**Prospect "D", N.T**

The property is 50% owned by Goldstake and historical estimated reserves are 1.53 million tonnes at 0.25% nickel and 0.62% copper at a width of over 28ft in sulphides and an additional 1.63 million tonnes at 0.15% nickel and 0.51% copper over 30ft in oxides.

The Company's intention with its partners is to spin off the interest into a new Australian public company raising (AUS) \$15million to confirm and increase the reserves and prepare a bankable feasible study.

**McGarry Property – Gold, Copper, Diamonds**

Goldstake holds an option to earn a 75% interest on this property. The project consists of a Mining Lease and 22 contiguous unpatented mining claims covering an area of 2,285.6 hectares. Located in the Larder Lake Mining Division of Ontario, the McGarry Property lies one mile northwest of the Kerr-Addison Mine, which has produced approximately 11 million ounces of gold historically. Previous diamond drilling by Goldstake resulted in multiple high grade gold intercepts, the best of which assayed 29.90 gt au per ton over 8.7 metres (28.5 feet). Previous exploration has discovered small diamonds on the south side of the property.

**Bancroft Region, Ontario**

As of September 5, 2007, Goldstake has completed 4 uranium acquisitions in the Bancroft area of Ontario. All 4 projects are 100% owned by the Company. Historical sampling (Pre NI 43-101) of the South Canonto claims (832 hectares) covers a potential large tonnage uranium/thorium/rare earth deposit with values reported up to 9.8 lbs. uranium oxide (U 308), 36 lbs. thorium [Th] and 10 lbs. per ton rare earth oxides [ree], of which 9.2 lbs. per ton are oxides of lanthanum, cerium, neodymium, praseodymium and yttrium.

**Rose Project – McGarry Township, Ontario**

100% owned by Goldstake. The 1280 acre property is located in the Kirkland Lake-Larder Lake region of Ontario and is comprised of VMS base metals, specifically a zinc-copper occurrence, hosted in a dark cordierite-bearing metavolcanic unit referred to as "dalmatianite-like". Rock samples collected from an initial examination returned zinc values ranging 0.3 to 11%. Further zinc-copper exploration will take place this season, which will include geological mapping and additional rock sampling. A ground magnetometer-electromagnetic survey will be initiated this coming winter.

**U S A**
*Utah Uranium Prospects*

Goldstake owns 50% of 200 claims of 22 acres each, one block of claims comprises one square mile and is adjacent to the Denison/IUC, Tony M Mine currently in development in the Henry Mountains Uranium Complex. In addition another block approx 3 quarters of a square mile is adjacent to the SXR Uranium 1 treatment mill. The third property is approx. 6 miles by 2 miles and a large part of which has the uranium bearing Morrison Formation perched above the surrounding terrain.

**Whitewood Creek South Dakota**

With recovery costs totaling approximately \$145/oz, and a controlling interest of over 250,000 ounces (out of a total of 729,000 ounces proven and minable gold reserves) [Pre NI 43-101], Whitewood Creek remains a formidable asset for the Company. Mining has yet to commence, pending a mandatory mine permit at an estimated cost of \$3million USD.

SYMBOL:

GXP

EXCHANGE:

TSX

SYMBOL:

GOO

EXCHANGE:

FRANKFURT

Close as of: 05/02/08  
CDN 0.10

52 week Hi-Lo  
\$0.175 - \$0.085

Shares Outstanding  
89,726,443

Market Capitalization  
\$8.9 Million

Year End  
Dec 31

For Investor  
Relations Contact

AGORACOM  
Investor Relations

eMail:

GXP@Agoracom.com

Website:

www.goldstake.com

SEDAR

Link: www.sedar.com

Historical data is prior  
to the Implementation of  
NI 43-101

## CORPORATE STRATEGY

- The Company is focused on maximizing its exposure to promising exploration opportunities, managing the risks inherent in exploration and to make appropriate use of financial management resources.
- Management's strategy to increase shareholder value and liquidity through the acquisition, exploration and development of precious metal, base metals and uranium properties with a high potential for success.
- Goldstake's experienced management team continues to evaluate and aggressively acquire additional exploration projects as capital and opportunities present themselves

## RECENT NEWS

*May 05, 2008 - Goldstake Updates Diamond Drill Program on Clay Property In Northern Ontario*

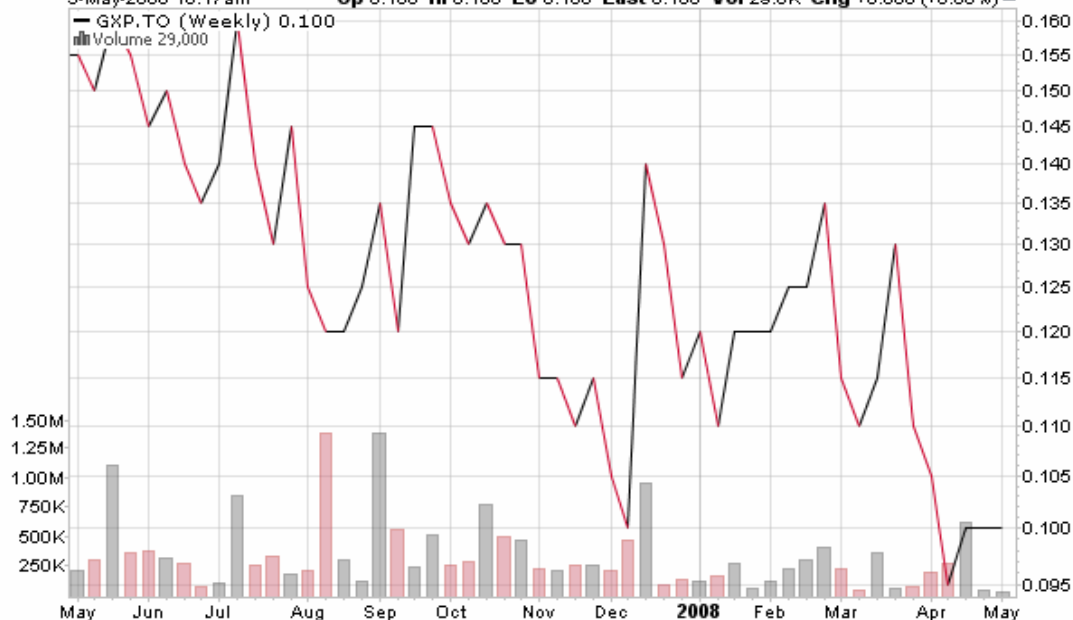
*Apr. 09, 2008 - McGarry-McVittie VMS Project Update*

*Mar. 12, 2008 - McGarry Gold-Diamond Project Update Mobilization of Drill: Focus Gold-Copper-Silver and Diamond Targets*

*Feb. 12, 2008 - Goldstake Explorations Inc.: McGarry Gold-Diamond Project Update*

## MARKET SNAPSHOT

**GXP.TO** (Goldstake Explorations, Inc.) TSE  
 5-May-2008 10:17 am Op 0.100 Hi 0.100 Lo 0.100 Last 0.100 Vol 29.0K Chg +0.000 (+0.00%)



*The material contained in this publication is for information purposes only and does not constitute an offer to sell or buy any security. The information is from sources we believe to be reliable, but we do not guarantee it; errors and omissions are inevitable. It is not all-inclusive. Do not rely on it as the sole source of information for making decisions.*

### Corporate Office

Goldstake Explorations Inc.

2150 Winston Park Drive,  
 Suite 204  
 Oakville, Ontario Canada  
 L6H 5V1  
 Tel: (905)829-3393,  
 Fax: (905)829-2968

**eMail:**  
 gxp@goldstake.com  
 or  
 gxp@agoracom.com

**Website:**  
 www.goldstake.com

Or  
 www.Agoracom.com/ir/goldstake

### Executive Team:

**Robert B. Cleaver,**  
 Director, Chairman &  
 CEO

**Charles L. McAlpine,**  
 Director, CFO &  
 Secretary/Treasurer

**Peter Froneman,**  
 Director & Audit &  
 Finance Committee

**Peter Mills,**  
 Director & Audit &  
 Finance Committee

**Transfer Agent:**  
 Equity Transfer &  
 Trust Company

**Legal Counsel:**  
 Macleod Dixon LLP  
 Toronto, Ontario

**Auditor:**  
 Parker Simone LLP,  
 Chartered Accountants  
 Mississauga, Ontario